

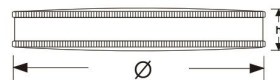
Needle Cases



B-15.05 = 50 x 25 x 4,5 mm
B-15.08 = 65 x 42 x 8 mm
B-15.06 = 75 x 25 x 4,5 mm



B-16.05 = 50 x 25 x 4,5 mm
B-16.08 = 65 x 42 x 8 mm
B-16.06 = 75 x 25 x 4,5 mm



complete insert only

B-19.65 **B-19.70**
Ø = 65 mm Ø = 62 mm
h = 15 mm h = 13 mm

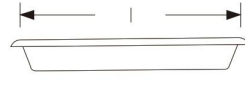
Trays



B-05.63
235 x 190 x 40 mm



B-05.82
Ø 200 x 70 mm



| | l | b | h |
|----------------|-----|-----|-------|
| B-04.20 | 200 | 150 | 38 mm |
| B-04.25 | 250 | 200 | 50 mm |
| B-04.30 | 300 | 250 | 50 mm |
| B-04.35 | 355 | 305 | 50 mm |
| B-04.40 | 405 | 305 | 50 mm |



B-04.20- B-04.40

Forceps Jars



| Size in mm Ø X h | Jar without lid | Jar with lid |
|---------------------|-----------------|----------------|
| 30 x 90 | B-15.30 | B-15.54 |
| 50 x 100 | B-15.50 | B-15.55 |
| 50 x 130 | B-15.51 | B-15.56 |
| 50 x 175 | B-15.52 | B-15.57 |
| 75 x 100 | B-15.75 | B-15.80 |
| 75 x 130 | B-15.76 | B-15.81 |
| 75 x 175 | B-15.77 | B-15.82 |
| 100 x 175 | B-15.98 | B-15.88 |
| 100 x 200 | B-15.99 | B-15.89 |

Instrument Box



B-20.20
205 x 105 x 40 mm

Kidney Trays



| Size in mm l x b x h | | |
|-------------------------|----------------|--------------|
| 170 x 100 x 35 | B-10.17 | 17 cm/ 6 ¾" |
| 250 x 140 x 40 | B-10.25 | 25 cm/ 10" |
| 275 x 150 x 45 | B-10.27 | 27 cm/ 10 ¾" |

Instrument Boxes



Size in mm
L x w x h

| | |
|----------------|----------------|
| 165 x 85 x 35 | B-21.46 |
| 200 x 100 x 35 | B-21.50 |
| 200 x 100 x 50 | B-21.51 |
| 230 x 130 x 50 | B-21.53 |
| 260 x 150 x 50 | B-21.56 |

| | |
|----------------|----------------|
| 270 x 235 x 50 | B-21.57 |
| 300 x 200 x 50 | B-21.60 |
| 325 x 275 x 30 | B-21.62 |
| 325 x 275 x 50 | B-21.63 |
| 420 x 80 x 40 | B-21.72 |

| | |
|----------------|----------------|
| 420 x 175 x 50 | B-21.75 |
|----------------|----------------|

Cotton Dispensers



Methot
B-35.01 **B-35.02**
ø50 x 75 mm
With lid Without lid



Spirit Lamp
B-19-1505
120 cc

Cotton wool containers



| Size in mm ø X h | Lid with knob |
|---------------------|----------------|
| 75 x 60 | B-08.07 |
| 75 x 75 | B-08.08 |
| 100 x 60 | B-08.10 |
| 100 x 100 | B-08.11 |
| 125 x 80 | B-08.12 |
| 125 x 125 | B-08.13 |
| 150 x 100 | B-08.14 |
| 150 x 150 | B-08.15 |
| 200 x 100 | B-08.20 |
| 200 x 150 | B-08.21 |
| 200 x 200 | B-08.22 |
| 240 x 160 | B-08.24 |
| 240 x 230 | B-08.25 |
| 290 x 160 | B-08.29 |
| 290 x 240 | B-08.30 |

Sterilization Drums



Schimmelbusch
(Horizontal Ventilation)

| Ø | h | |
|--------------|---|----------------|
| 140 x 140 mm | | B-25.14 |
| 160 x 150 mm | | B-25.16 |
| 190 x 160 mm | | B-25.19 |
| 190 x 190 mm | | B-25.20 |
| 240 x 120 mm | | B-25.24 |
| 240 x 160 mm | | B-25.25 |
| 240 x 240 mm | | B-25.27 |
| 290 x 160 mm | | B-25.29 |
| 290 x 240 mm | | B-25.30 |
| 340 x 160 mm | | B-25.34 |
| 340 x 240 mm | | B-25.35 |
| 390 x 140 mm | | B-25.39 |
| 390 x 190 mm | | B-25.40 |
| 390 x 290 mm | | B-25.41 |



Konrich
(Vertical Ventilation)

| Ø | h | |
|--------------|---|----------------|
| 140 x 140 mm | | B-26.14 |
| 160 x 150 mm | | B-26.16 |
| 190 x 160 mm | | B-26.19 |
| 190 x 190 mm | | B-26.20 |
| 240 x 120 mm | | B-26.24 |
| 240 x 160 mm | | B-26.25 |
| 240 x 240 mm | | B-26.27 |
| 290 x 160 mm | | B-26.29 |
| 290 x 240 mm | | B-26.30 |
| 340 x 160 mm | | B-26.34 |
| 340 x 240 mm | | B-26.35 |
| 390 x 140 mm | | B-26.39 |
| 390 x 190 mm | | B-26.40 |
| 390 x 290 mm | | B-26.41 |



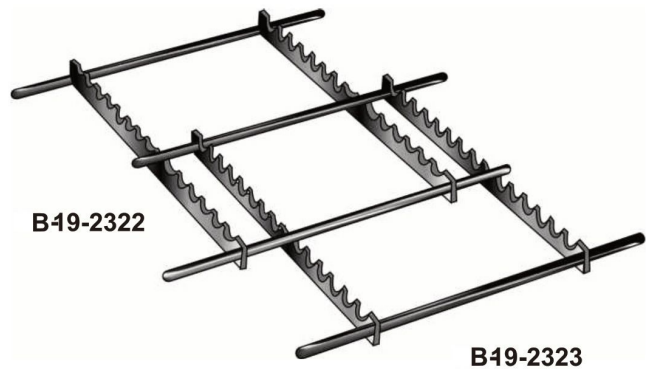
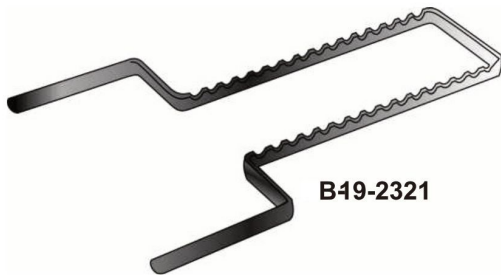
Norm Trays

B-19-2101 - B-19-2104
288 x 187 x 40 mm

B-19-2201 - B-19-2204
288 x 93 x 40 mm

| | Tablet | Lid | |
|-----------------|--------------|--------------|-----------------|
| B49-2101 | Perforated | Unperforated | B49-2201 |
| B49-2102 | Unperforated | Unperforated | B49-2202 |
| B49-2103 | Perforated | Perforated | B49-2203 |
| B49-2104 | Unperforated | Perforated | B49-2204 |

Inserts for Trays



B49-2323

